

Workplace for professionals!

Worktops made of stainless steel are robust, easy-to-maintain and have a timeless design. In addition to the standard models, we also plan and manufacture special tops in stainless steel, copper, brass and solid surface material tailored to the customer requirements.

We manufacture sinks and inserts in numerous variations.

Exemplary design with two sinks and convex perforated metal sheet insert.



Worktop

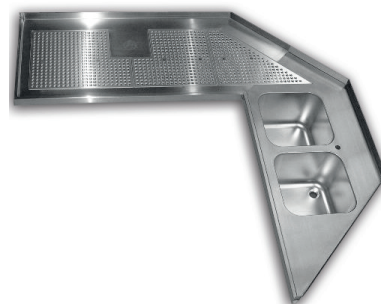
- Worktop made of stainless steel 1.4301 (V2a)
- Optionally, with all sites retaining lip or up edge customers' side (standard height: 35 mm)
- Drip trough, seamless deep-drawn, with convex perforated metal sheet insert, if required with integrated glass rinser (fig. 1)

Equipment & accessories

- 1–2 welded sinks to the left or right side with standpipe and outlet valve 1 1/2" (300 mm x 500 mm x 300 mm)
- Glass rinser, in drip trough (optionally in drip well incl. drain cup), integrated
- Pressure regulator 1/2", 1–4 bar, outlet pressure infinitely variable
- Pressure activated rinser "Spülboy" (pre-cleaning and rinsing machine) and cleaning brush
- Drain fittings for 1 or 2 sinks
- Cold water tap
- High-pressure and low-pressure mixer tap for 1 and 2 sinks (fig. 2 + 3)

Special design

- Special worktops made of copper (polished), brass (polished) and solid surface material (fig. 4) are available on request
- Special shapes/designs on request (fig. 5; see fig. on the right side)



The descriptions refer to our series production programme. On request, we also manufacture worktops made of solid surface material. All of our solid surface materials are of a high quality (STARON®, CORIAN®, HI-MACS®, AVONITE®, DURAT®) and are made by renowned manufacturers.